

Il riconoscimento facciale nell'arte. Opacità delle macchine e tentativi di disvelamento

86° Nexa Lunch Seminar
mercoledì 24 marzo 2021

Cristina Voto
ERC FACETS - UniTO /
Universidad Nacional de Tres de Febrero /
Bienal de la Imagen en Movimiento

Tony Oursler, 2012

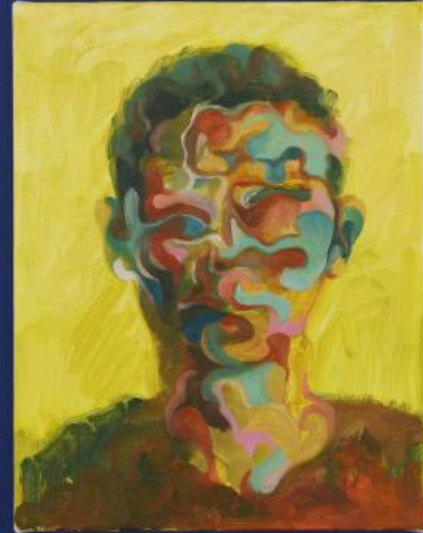


Shinseungback Kimyonghun, *Cloud Face*, 2012



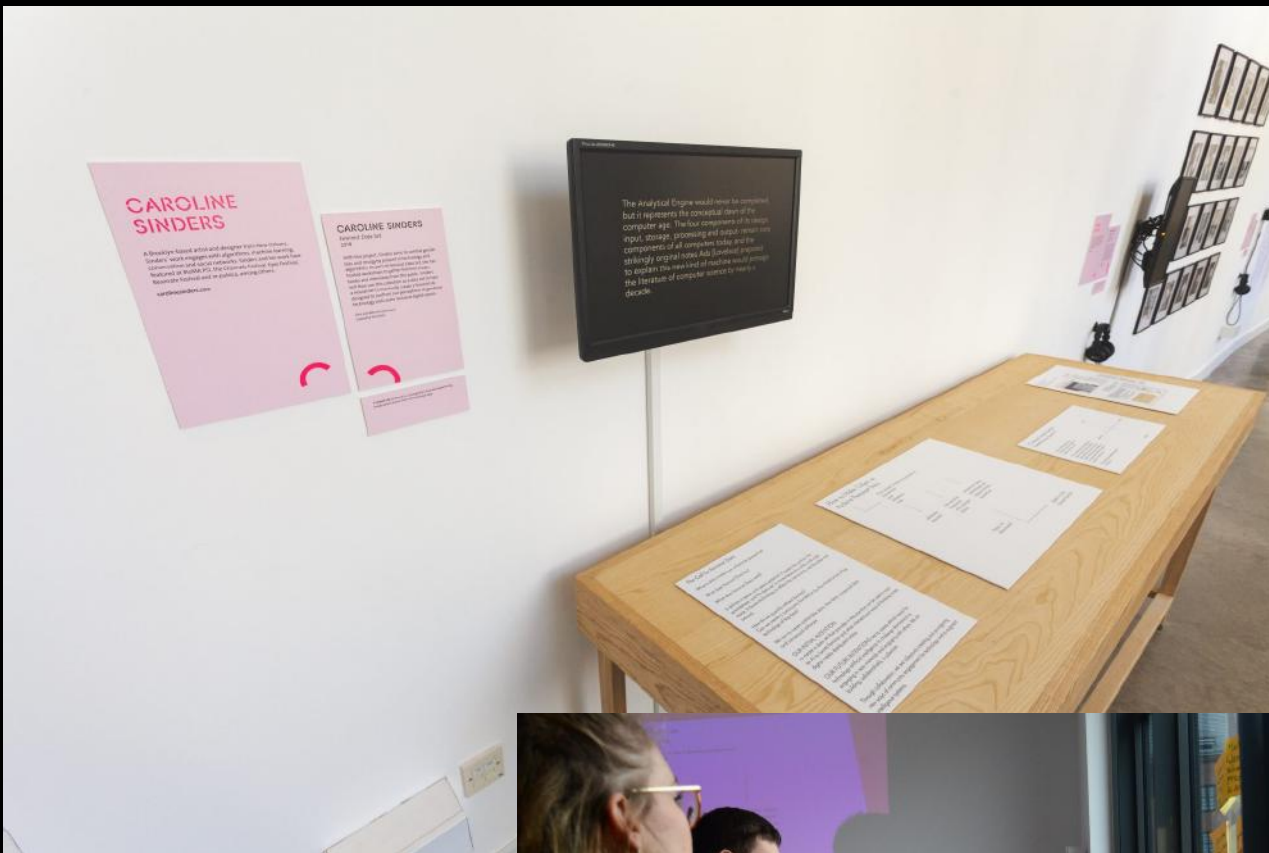
Cloud Face
2012

Shinseungback Kimyonghun, *Nonfacial Portraits*, 2018

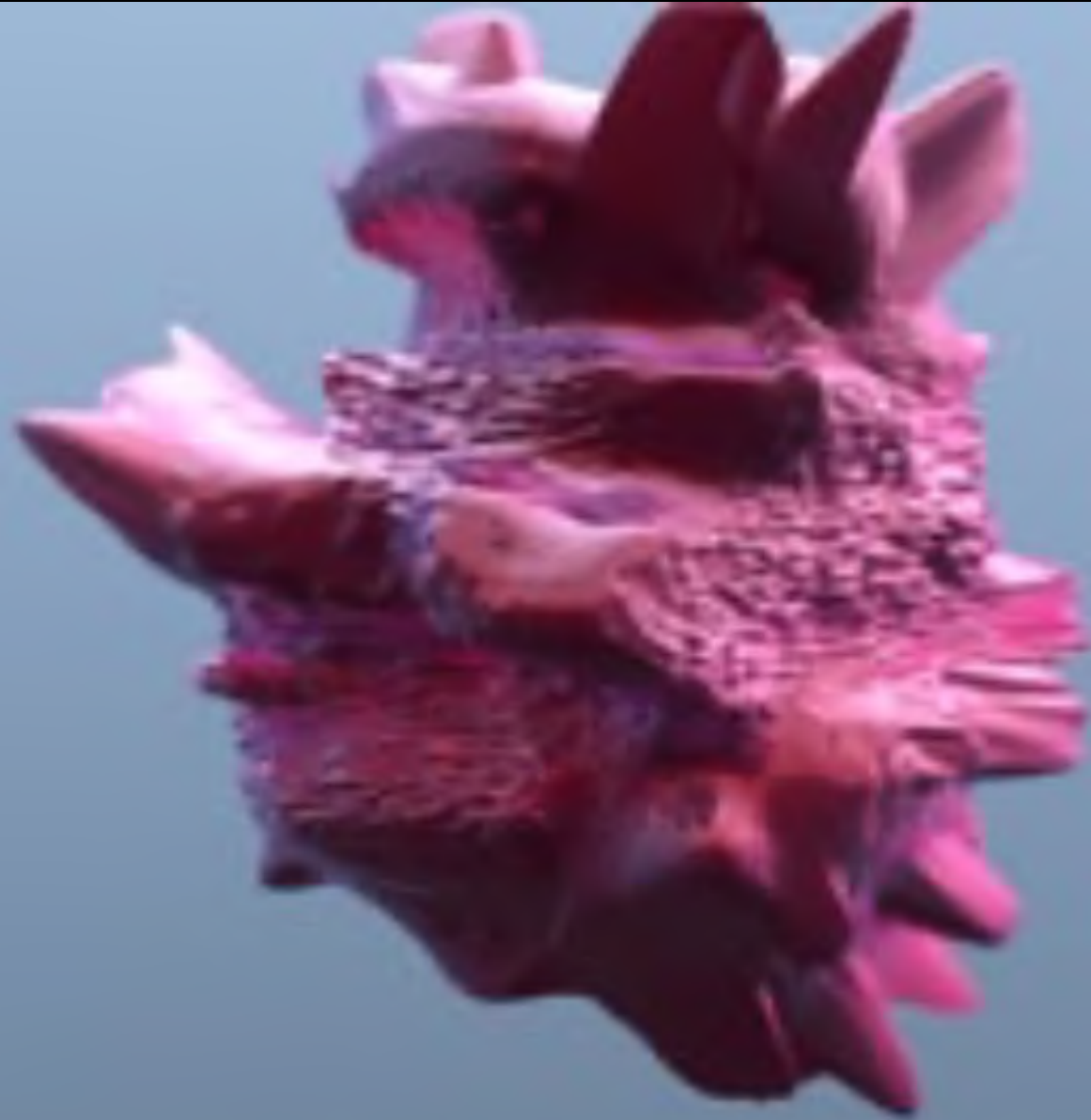


Nushin Isabelle Yazdani, *Bias Machine*, 2018

Caroline Sinders, *Feminist Data Set*, 2017 ...



Zach Blas, *Facial Weaponization Suite*, 2011–2014



Michal Kosinski e Yilun Wang, *Deep neural networks are more accurate than humans at detecting sexual orientation from facial images*, 2018

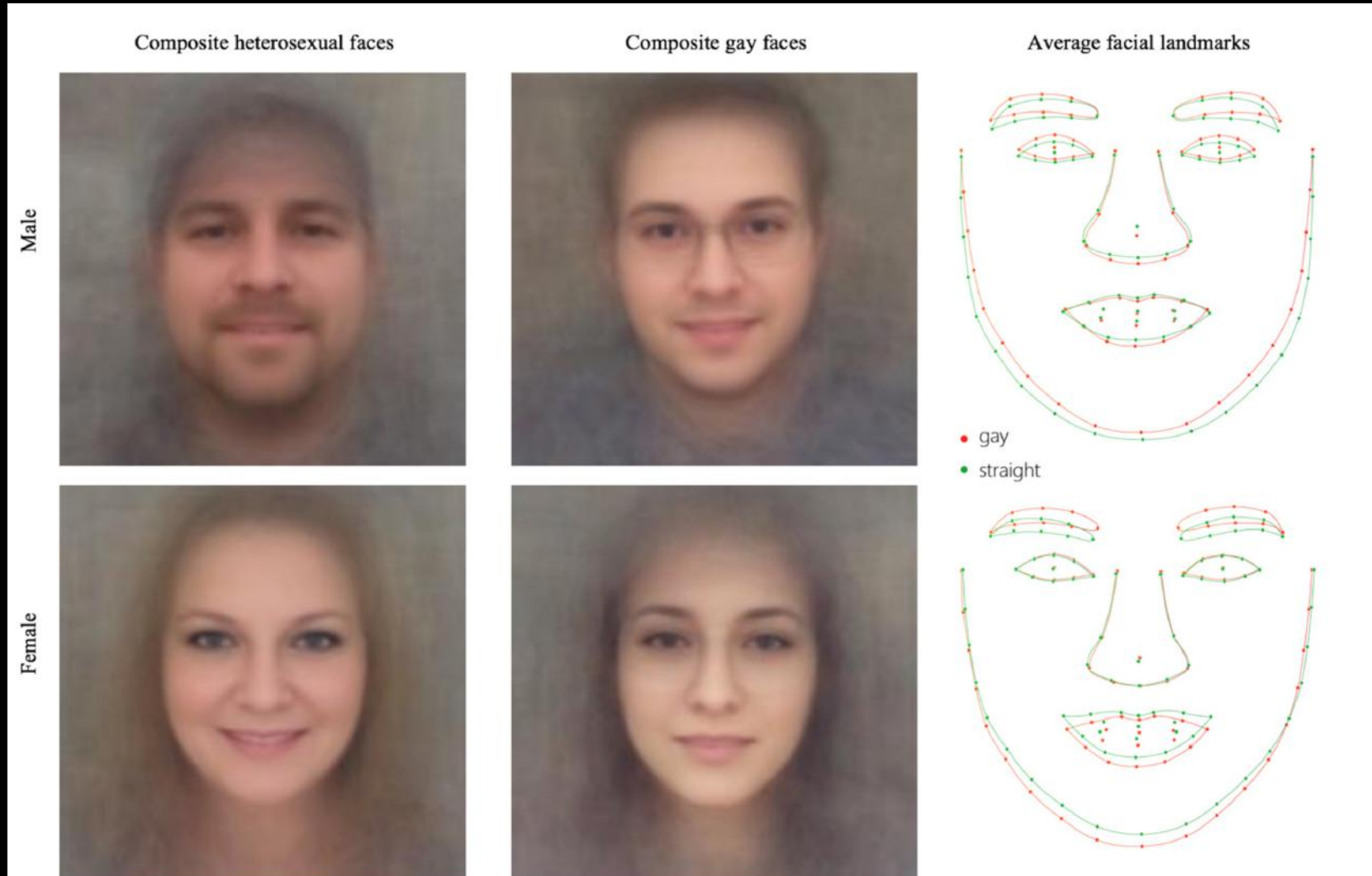


Figure 4. Composite faces and the average facial landmarks built by averaging faces classified as most and least likely to be gay.

Felipe Rivas, *Sexo, imagen y algoritmo: homosexual data, 2018–2019*

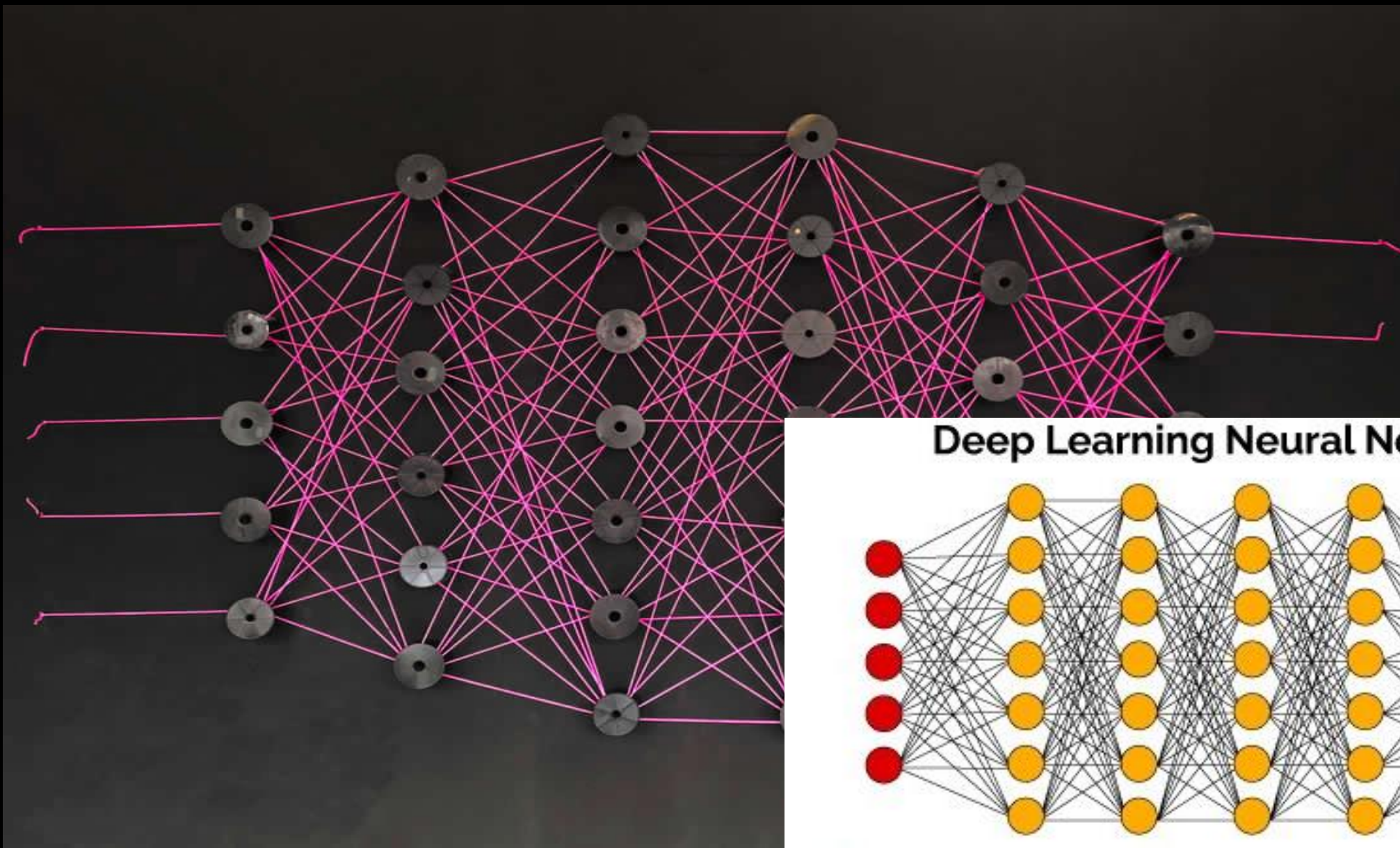


Figure 4. Composite faces

● gay
● straight



Felipe Rivas, *Sexo, imagen y algoritmo: homosexual data, 2018–2019*



Felipe Rivas, *Sexo, imagen y algoritmo: homosexual data, 2018–2019*

